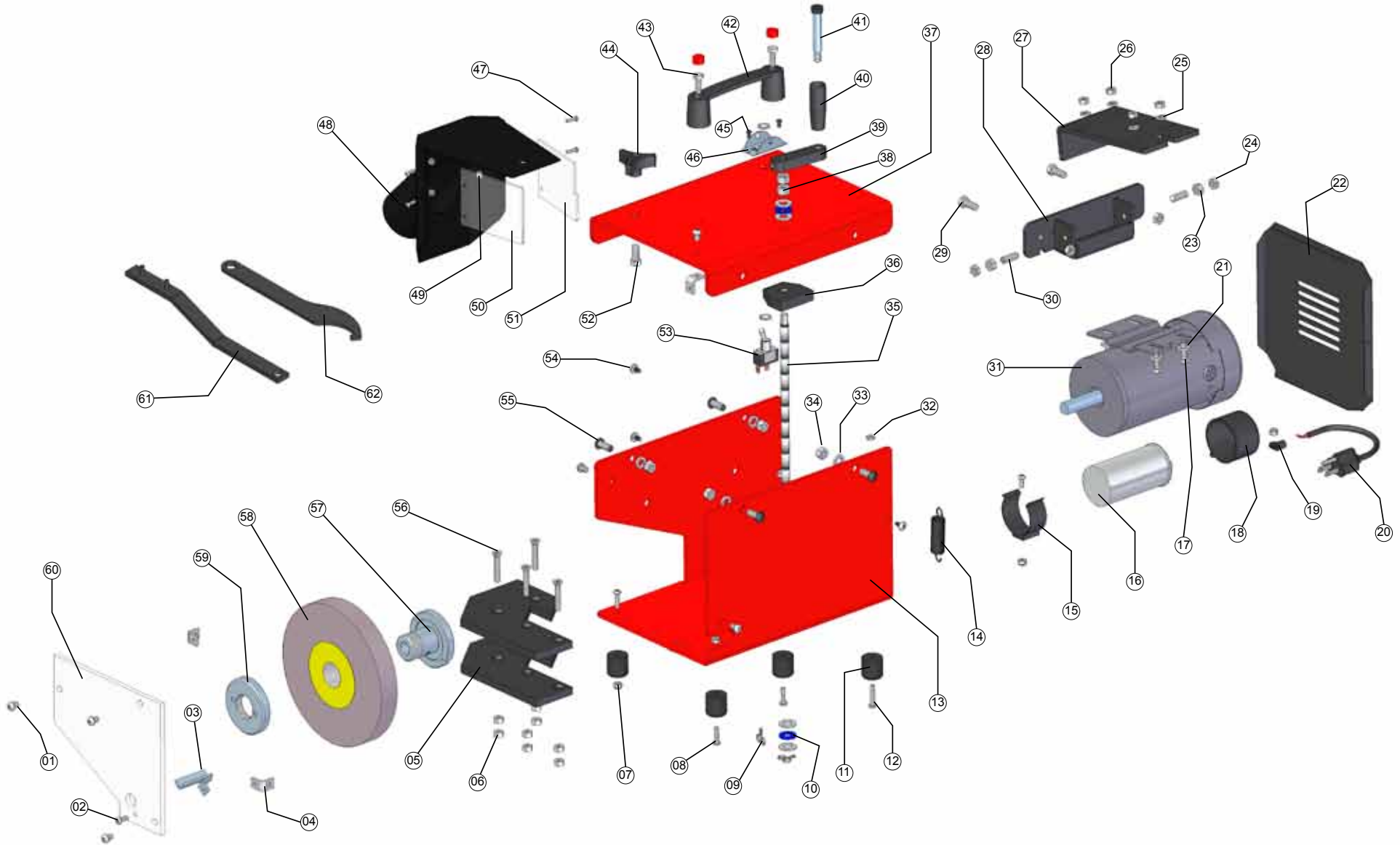




PARTS DIAGRAM FOR: MAG-9000 Series Sharpener Covering model years 2006 - April 2010

The MAG-9000 is a solid low cost solution in rotary lawn mower blade sharpening. It provides you with 60 second per blade performance in a small package. Since its release in 1987 the MAG-9000 has become a best friend of lawn care professionals



Magna-Matic Corporation - W4599 County Road IW - Waldo WI 53093 USA
Phone: (920) 564-2366 - FAX: (920) 564-2368 - Toll Free USA & Canada **1-800-328-1110**
<http://www.magna-matic.com> - email: sales@magna-matic.com © Copyright 2008 All rights reserved



PARTS DIAGRAM FOR: MAG-9000 Series Sharpener

The MAG-9000 is a solid low cost solution in rotary lawn mower blade sharpening. It provides you with 60 second per blade performance in a small package. Since its release in 1987 the MAG-9000 has become a best friend of lawn care professionals

Key #	Part #	Description
01	H-25C37BSSZ	1/4-20x3/8 screw (6)
02	H-18C50BSSZ	10-24x1/2 screw (2)
03	9000-29	Valve stem grinding guide
04	9000-26	Angle nut (3)
05	9000-22	Worktable (2)
06	H-25CNFZ	1/4-20 nut (10)
07	H-18CNINFZ	10-24 nylon nut (4)
08	H-18C75BSSss	10-24x3/4 screw (4)
09	H-Cotter Pin	Cotter pin
10	9000-37	Thrust bearing (2)
11	9000-11	Rubber foot (4)
12	H-18C100BSSZ	10-24x1 screw
13	9000-17	Body
14	9000-25	Spring
15	9000-33	Capacitor clamp
16	9000-31	Capacitor
17	H-25F50HSZ	1/4-28x3/4 bolt (4)
18	9000-32	Capacitor rubber boot
19	9000-36	Cord clamp
20	9000-12	Cord set
21	H-25WFZ	1/4 washer
22	9000-03	Rear motor cover
23	H-31FNFZ	5/16-24 nut (2)
24	H-31FNJZ	5/16-24 jam nut (4)
25	H-25WLZ	1/4 lock washer (6)
26	H-25FNFZ	1/4-28 nut (4)
27	9000-02	Motor pivot bracket
28	9000-01	Body pivot bracket
29	H-31F75HSZ	5/16-24x3/4 bolt (2)
30	H-31F100PSSS	5/16-24x1 pointed set screw (2)

Key #	Part #	Description
31	9000-24	Motor
32	H-18CNFZ	10-24 nut
33	H-31WLZ	5/16 lock washer (4)
34	H-31CNFZ	5/16-18 nut (4)
35	9000-16	Threaded adjusting rod
36	9000-18	Adjusting nut
37	9000-17	Body
38	H-37CNFZ	3/8 nut (2)
39	9000-13	Crank base
40	9000-14	Crank handle
41	H-37N200KSS	Shoulder bolt
42	9000-58	Carry handle
43	H-25C75HSZ	1/4-20x3/4 bolt (2)
44	9000-09	Knob
45	H-SR03065B	Push rivet
46	9000-55	Switch plate
47	H-12C50MSZ	6-32x1/2 screw (4)
48	9000-50	Vac grit guard
49	H-12CNINFZ	6-32 nylon nut (4)
50	9000-06	Front lexan guard
51	9000-07	Rear lexan guard
52	H-31C75BSSB	5/16-18x3/4 bolt
53	9000-54	On/off switch
54	H-18N50SPT-Z/A	10x1/2 sheet metal screw (3)
55	H-31C75BSSB	5/16-18x3/4 screw (4)

56	H-25C150PFZ	1/4-20x1.5 screw (4)
57	9000-20	Arbor
58	9000-23	Grinding wheel
59	9000-19	Arbor nut
60	9000-08	Front lexan guard
61	9000-21	Spanner wrench
62	9000-53	Arbor wrench

Magna-Matic Corporation - W4599 County Road IW - Waldo WI 53093 USA

Phone: (920) 564-2366 - FAX: (920) 564-2368 - Toll Free USA & Canada **1-800-328-1110**

<http://www.magna-matic.com> - email: sales@magna-matic.com © Copyright 2010 All rights reserved